

1. Install AVerMedia Software(MCS)
2. Configure Digital TV Channels.
3. Go into full screen on TV channel

For Dual Tuner usage:

Click on PIP Icon, you might refer to below picture.



4. You can see a little screen appears as below picture.



5. You can click again on "PIP" again to change a different appearance.



**For Multi Program Usage:**

It is sub-channels under a frequency (If there are only one channel in a frequency, then you can only see one screen)

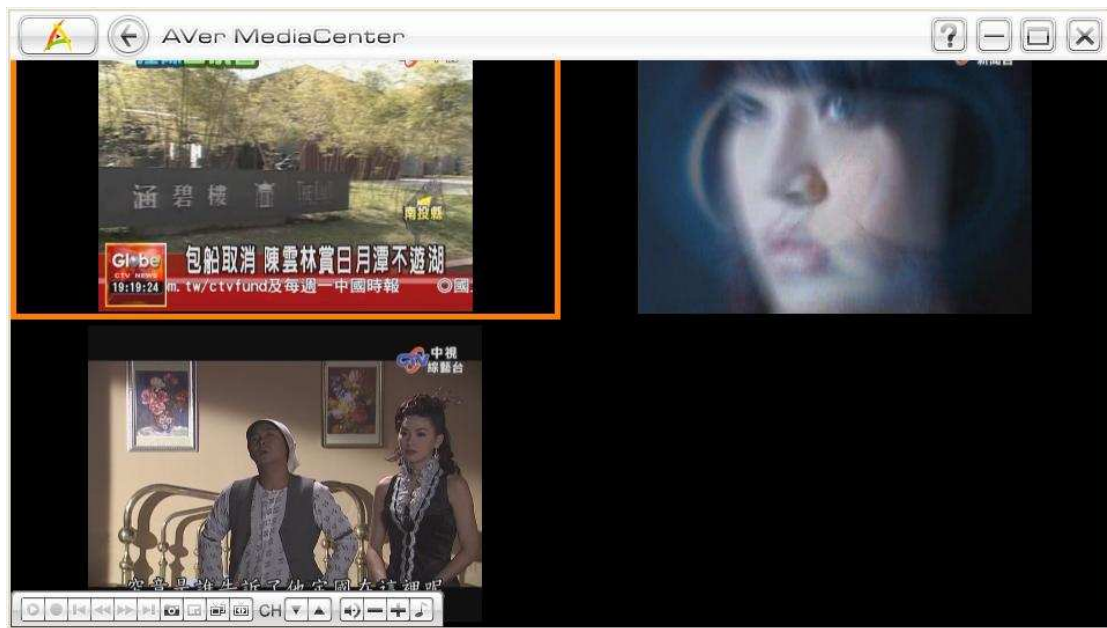
Please click on Multi-Program Icon



6. You will see below sub-channels



7. Click again on "Multi Program", you might see it divide into 4.



Now you should know the simple way PIP & Multi-Program acts.